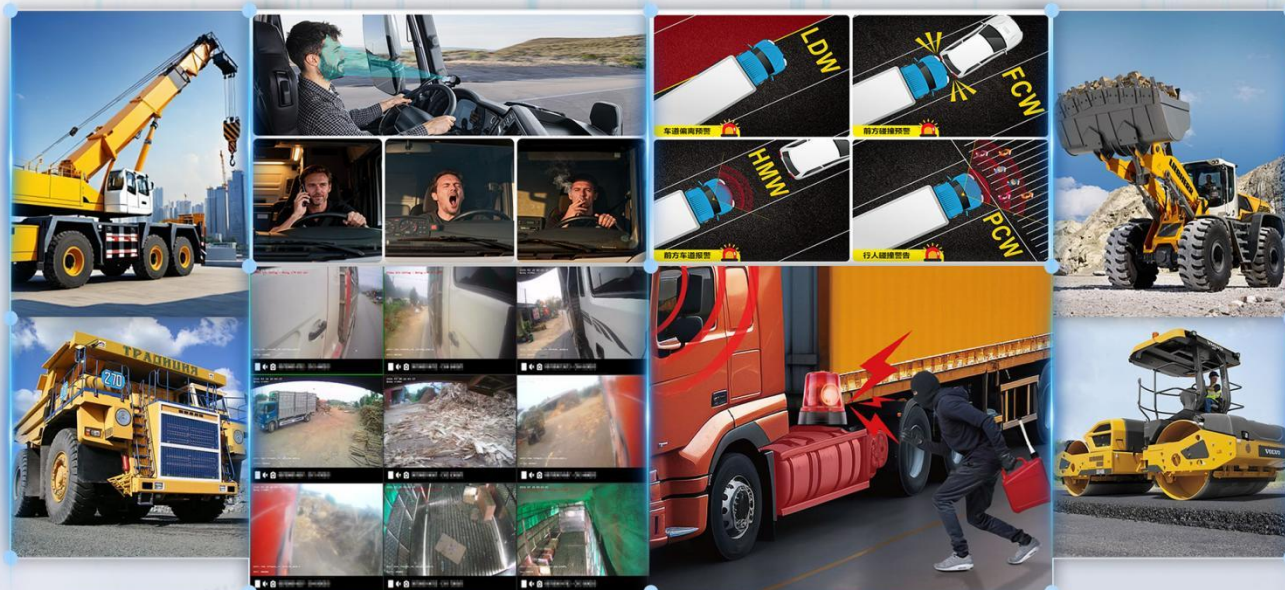


10.36-inch IPS 4G 5CH AI Blind Spot Integrated Video Recorder



Product Manual

Supported protocols: JT808, JT1078

Key advantages

- ◆ Default 4G full-network compatibility with 7-mode support, BeiDou GPS, and single TF card storage
- ◆ Supports 2K/4K HD real-time storage
- ◆ Compatible with 2MP, 1.3MP, and 1MP coaxial 5-channel AHD HD cameras
- ◆ Wide voltage input range of 9V-36V, automatic shutdown at low voltage, and screen-off protection function
- ◆ TF Card storage (each card supports up to 512GB)
- ◆ AHD HD, video horizontal and vertical mirroring adjustment
- ◆ All-in-one device with simple and convenient installation
- ◆ Each device can set its own startup logo
- ◆ The AI algorithm optionally supports ADAS/DMS/BSD systems
- ◆ RS232/RS485 (expandable)
- ◆ Supports optional display configurations: single-screen, dual-screen, triple-screen, quad-screen, and quintuple-screen displays

Product Features

- ◆ H.264/H.265 video encoding with 5-channel AHD input supporting 2MP HD video and analog SD input.
- ◆ Professional automotive power supply design with 9-36V DC wide voltage input; reverse polarity protection circuit, compatible with various vehicles;
- ◆ TF card data recording (supports high-capacity TF cards, up to 512GB per card)
- ◆ Delayed video recording function for fire extinguishing (time adjustable up to 48 hours);
- ◆ Supports GPS/BD and optional 4G/5G module expansion;
- ◆ Software upgrades can be performed via TF card; remote operation and maintenance upgrades are available
- ◆ Live video, real-time positioning, trajectory playback, video playback, real-time speed
- ◆ Mobile phone monitoring, computer monitoring, fleet management, 24/7 surveillance, parking monitoring
- ◆ Wide voltage range, IPS display, HD imaging, voice control, and full-screen reversing display.
- ◆ Displays vehicle information including driving status, license plate, and route for easy management;
- ◆ Remote support for audio/video surveillance, including speed limit violation alerts, boundary crossing alerts, and line deviation alerts;

Product Specifications

| project Q1106 | | parameter |
|------------------------------------|-------------------------------------|--|
| system parameter | operating system | Linux |
| | System language | Chinese, English, and other languages (customizable) |
| | video coding | H.265/H264 video encoding |
| | OSD | Character overlay feature supports overlaying GPS location information, time and date, vehicle ID, and other data images |
| Video Recording and Storage | memory | Supports up to 1×512GB high-capacity TF card |
| | Upgrade method | Supports local and remote TF card upgrades |
| | Video mode | Start recording |
| | file system | exFAT32 file system |
| | Video playback | Supports remote playback and local playback |
| Communication and Positioning | remote monitor and control | Supports 4G/5G remote video surveillance |
| | networking protocol | Supports JT/T 808 2013/2019 |
| | locate function | GPS/Beidou positioning |
| | device management | Supports remote operation and maintenance configuration parameters |
| CPU and Algorithms | Master control chip | HiSilicon chips |
| | AI computing power | Built-in NPU, approximately 2 TOPS |
| | AI algorithm | Supports ADAS/DMS/BSD |
| Alarm function | Alarm function | Excessive speed alarm, IO alarm |
| | IO joggle | 4 alarm input channels, 2 alarm output channels |
| Video features | video in | 5-channel AHD video input |
| | video monitor 525 vidicon video out | 1-channel RGB/MIPI video output |
| | Video format | PAL / NTSC |
| | Video resolution | Supports 1080P HD display |
| | Video preview | Supports multi-channel real-time preview |
| Audio settings | Audio input | Route 1 |
| | Audio output | Route 1 |
| interface parameters | USB joggle | 1 USB 2.0 port |
| | SIM card slot | 1 |
| | Antenna interface | 4G antenna, GPS antenna |
| | gorge line | RS232/RS485 (expandable) |
| Power Supply and Power Consumption | Power Management | Adaptive wide-range power input with reverse connection protection; Supports delayed shutdown |
| | input voltage | DC:+9V-+36V |
| | output voltage | +12V@1.5A |
| | power dissipation | Normal operating state <20W, standby state <7W |
| work environment | working temperature | -20°C-+70°C |
| | Working humidity | 20%-80% |
| size | size | The device measures 10.36 inches in size (265.99mm (L) * 32.4mm (W) * 130mm (H), excluding the stand). |

Supports the Ministry of Transport standard agreements JT808 ,
JT1078

You can launch up to 2 IP departmental platforms
simultaneously

Develop remote operation and maintenance tools.

Video surveillance platform:

The monitoring equipment uses platform software such as
CMSV6, CMSV7, 51.

Download the 4G real-time monitoring platform at:

- 1、 <http://43.248.128.203:8080/>
- 2、 <https://gps51.com/#/login?lg=en>

1. Platform login interface:

Supports real-time video, location tracking, image capture,
alarm linkage, and remote playback

Supports web interface management, desktop client viewing,
and real-time mobile viewing.

Supports multiple languages and offers free data forwarding
through the API.



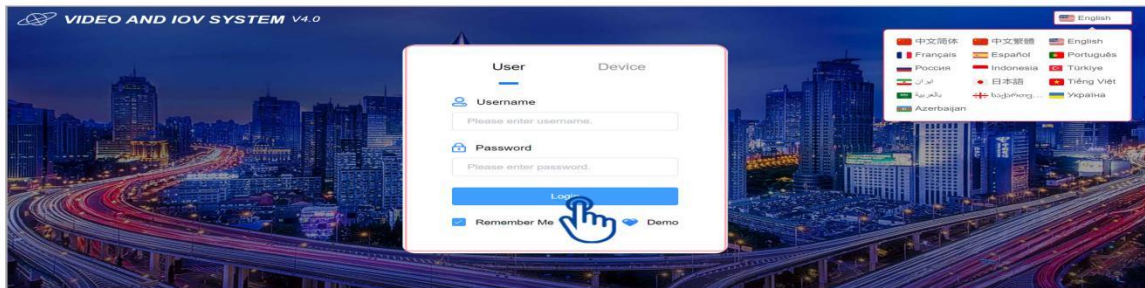
51 Platform Login System:

51 51 platform

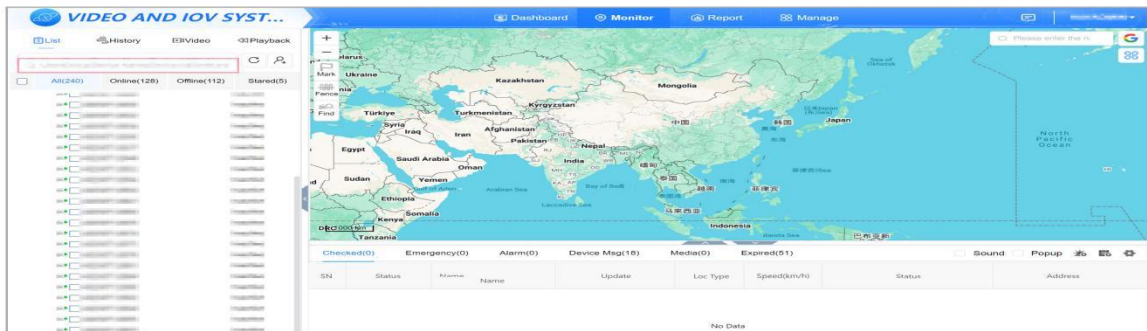
Supports real-time video, location tracking, image capture, alarm linkage, remote playback, web management interface, computer client viewing, and mobile real-time viewing. Supports multiple languages and provides free API data forwarding.

web browser

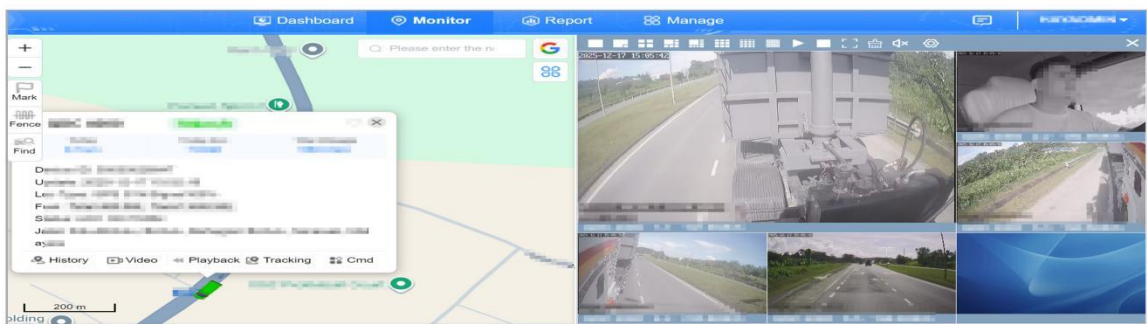
1. Switch languages in the top-right corner. Enter your account and password in the middle message box, then click Register to access the system.



2. After entering the main page, you can search for vehicles and view their information.



3. Click the vehicle to view real-time footage, location, track, and video playback, as well as fuel consumption.





Tongtianxing Login Platform:

CMSV7 Platform login interface

Supports multiple languages and offers free API data forwarding
 Supports web interface management, desktop client viewing, and real-time mobile viewing
 Supports real-time video, location tracking, image capture, alarm linkage, and remote playback

web browser

1. Web browser login page



2. Main function of web browser display

Real-time view

Track Inquiry

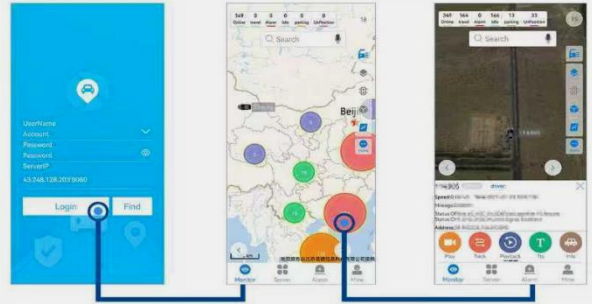
Remote playback



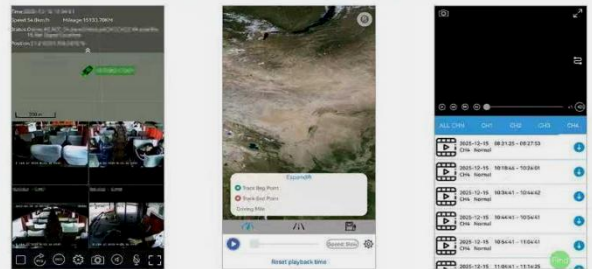
CMSV7 Platform login interface

app login interface

1. App base page (simple and easy to use)



2. View real-time product usage through the app



Effect Diagram Of Real-time 4G Video Monitoring Of Vehicles:

Effect Diagram Of Real-time 4G Video Monitoring Of Vehicles

Video Mode | Map Mode | Video Poll

GPS | Media Files | System

Export Excel

| Operate | Plate No. | Company | Grouping | Lines In Operation | GPS Time | Longitude/Latitude | Position | Service Expires |
|-------------------------------------|-----------|---------|----------|--------------------|---------------------|--------------------|------------|-----------------|
| <input checked="" type="checkbox"/> | 08700 | CG | CG | | 2025-12-12 13:27:13 | 105.846840 | 105.846840 | |
| <input checked="" type="checkbox"/> | 08700 | CG | CG | | 2025-12-12 13:23:43 | 108.237972 | 108.237972 | |

Real-time Positioning

Time: 2025-12-18 17:43:46

Driving speed: 0 km/h

Today's Mileage: 74.7 km

Status: Online / Parking(10s) / ACC On

Address: [Empty]

Fuel: [Empty]

Temperature: [Empty]

Humidity: [Empty]

Video | Talkback | Track | TTS | Instruction



Product Dimensions:



Wiring Diag:

